

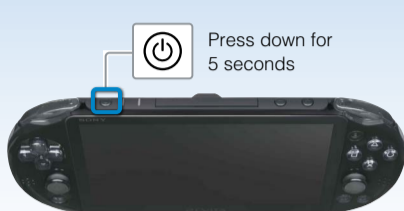
Welcome to the World of PlayStation



Quick Start Guide

English
PCH-2001

Using your PlayStation®Vita system for the first time



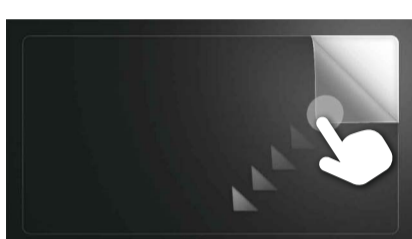
1 Turn on your PS Vita system.

When turning on your system for the first time, press and hold down the (Power) button for five seconds. When the power comes on, the power indicator next to the (Power) button will light up green.

When the power indicator blinks slowly in green or blinks in orange, charge the system as described in "Charging" in this guide.

2 Begin to set up your PS Vita system.

To start making initial settings, drag your finger from the top right to the bottom left of the touchscreen (peel the screen) as shown in the figure on the left.



Touchscreen gestures



Drag
Slide while touching



Tap
Touch lightly and then raise your finger



Flick
Flick lightly

3 Select your language, time zone, and the date and time.

Drag lists of items to scroll and find your choice. Tap an item to select it, and then tap [Next]. To scroll quickly, flick the list of items.



4 Link your Sony Entertainment Network account to your PS Vita system.

If you already have an account

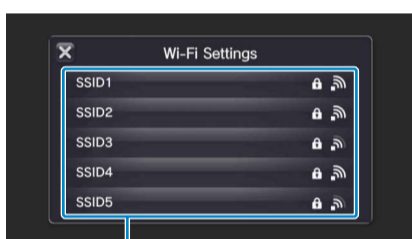
You need an Internet connection to link your Sony Entertainment Network account to your PS Vita system and access PSNSM services. If you cannot connect to the Internet, you must set up your system as explained in "If you do not have an account, or if you want to sign up for an account later".

- Tap [Yes, I do], [Use], and then tap [Next].
- Connect to the Internet by selecting an access point on the Wi-Fi settings screen.
- Enter your Sony Entertainment Network account information. Tap the text entry field, and then enter text using the keyboard that appears.

If a system software update is required after step ②, select [Set Later] and tap [Next]. Follow the on-screen instructions to continue the setup.

Connecting to the Internet

When an Internet connection is required, your system automatically searches for Wi-Fi access points, and then the Wi-Fi Settings screen appears. Connect to the Internet in a location that has a Wi-Fi access point you can use. For details about connecting to a Wi-Fi access point, refer to the access point documentation or contact the service provider or person who set it up.



Access points found

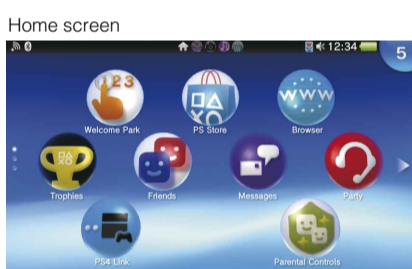
If you do not have an account, or if you want to sign up for an account later

Set up your PS Vita system for trial use of PSNSM services. To make full use of PSNSM features, you must sign up for a Sony Entertainment Network account.

- Tap [No, I don't], and then tap [Next]. Follow the on-screen instructions.

5 Complete initial setup.

Tap [OK] to complete initial setup of your PS Vita system. An introductory video will play.



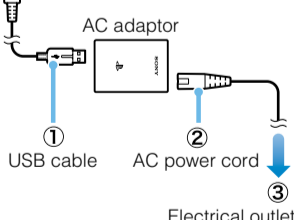
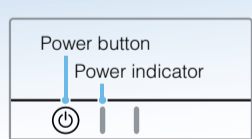
You can access applications for the PS Vita system from the home screen.

Creating a Sony Entertainment Network account

You can create an account under (Settings) > [PSNSM] > [Sign Up] after the initial setup is complete.

- You can link only a single account to a PS Vita system.
- You can also create an account using a PlayStation[®]3 system, a PlayStation[®]4 system, or a computer. The created account can be linked to a PS Vita system.
- To create an account (sub account) for users under a certain age, you must first create an account for a parent or guardian (master account) using a PS3[™] system, a PS4[™] system, or a computer. For details, refer to the User's Guide.

Charging



Charging

To charge your PS Vita system, connect it to a power source as shown in the diagram on the left. While the system is charging, the power indicator lights up orange. For details including approximate charging times, refer to the User's Guide.

Check the status of your PS Vita system by seeing how the power indicator lights up or blinks

	Lights up green	The system is on.
	Blinks in green	The system is entering standby mode/power off.
	Blinks slowly in green	The battery charge is low.
	Lights up orange	The system is charging.

When you press and hold down the (Power) button for five seconds and the power indicator blinks in orange, the battery charge is too low to turn on the PS Vita system. Charge the system for about 30 minutes before turning on the system.

SONY



4 - 4 6 9 - 3 8 8 - 4 1

4-469-388-41(1)

Safety Guide

Contains precautions for the safe use of your PS Vita system, system specifications, and service information. Before using this product, carefully read the Safety Guide and retain it for future reference.

User's Guide

To read the User's Guide, tap (User's Guide) on the (Settings) LiveArea[™] screen. An Internet connection is needed to read the User's Guide. You can also read the User's Guide by visiting the following website: manuals.playstation.net/document/

Important Disclosures

For important disclosures, see the Safety Guide. For disclosures about specific applications, tap or on the LiveArea[™] screen for the application.

Support Website

us.playstation.com/PSVITAqsg

Visit the Support Knowledge Center for additional details and technical information regarding your PS Vita system.

"PS" and "PlayStation" are registered trademarks of Sony Computer Entertainment Inc.
"PS3", "PS4", "PS VITA", "LIVEAREA" and "PSN" are trademarks of the same company.
"SONY" and are registered trademarks of Sony Corporation.
"Sony Entertainment Network" is a trademark of the same company.

Design and specifications are subject to change without notice.
Information about system functionality and images published in this document may vary from those for your PS Vita system, depending on the system software version in use.
Also, the illustrations and screen images used in this guide may vary from the actual product.

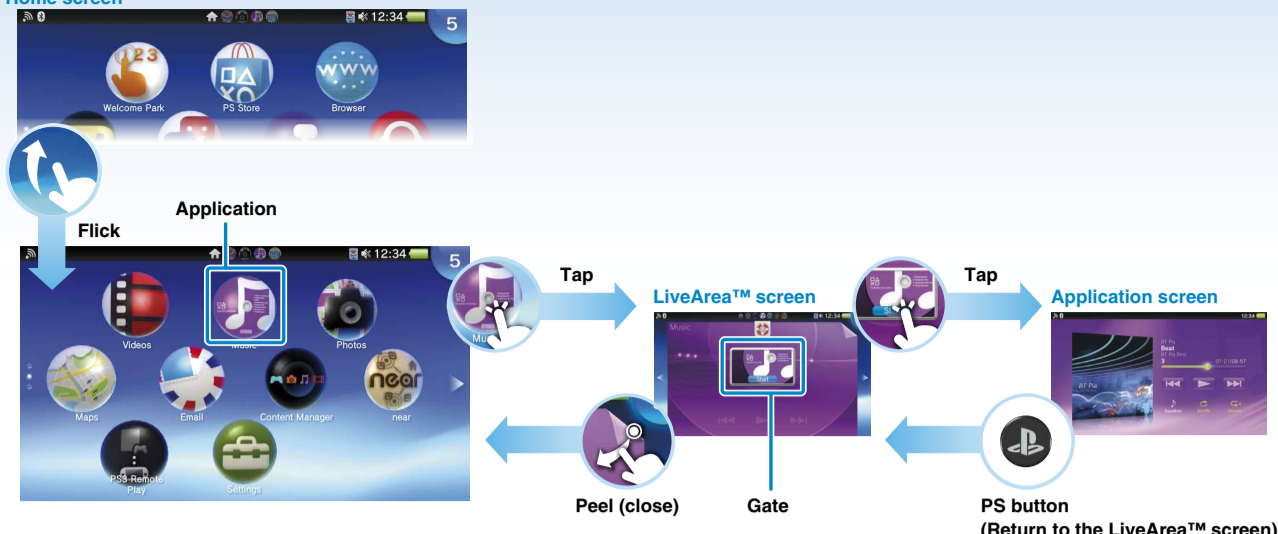
©2014 Sony Computer Entertainment Inc. All rights reserved. Printed in China



Using the screen

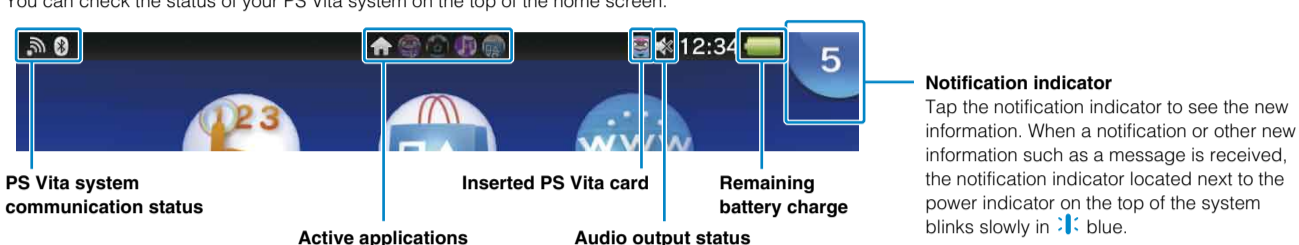
When you tap the icon for an application on the home screen, the application's LiveArea™ screen appears. On the LiveArea™ screen, tap the gate to start the application. You can run multiple applications at the same time. The home screen can have a maximum of 10 pages.

Home screen

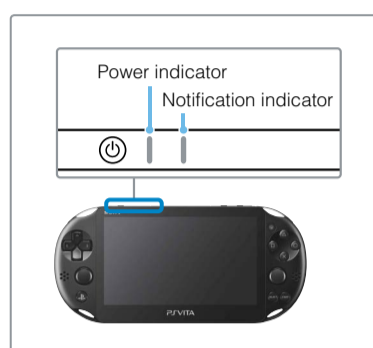


Info bar

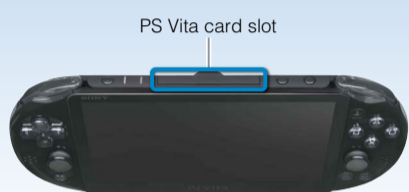
You can check the status of your PS Vita system on the top of the home screen.



Notification indicator
Tap the notification indicator to see the new information. When a notification or other new information such as a message is received, the notification indicator located next to the power indicator on the top of the system blinks slowly in blue.

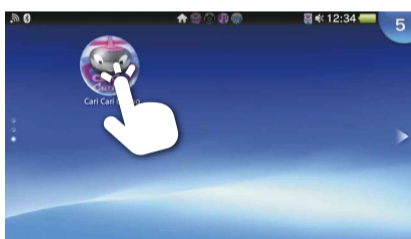


Playing games



1 Insert the PlayStation®Vita card.

Your PS Vita card contains PS Vita format software. When the PS Vita card is inserted, the icon for the game appears on the home screen.



2 Start the game.

On the home screen, tap the icon for the game. The LiveArea™ screen for the game appears. If you are connected to the Internet, various details, such as the latest information about the game, appear on the LiveArea™ screen.



3 Start playing the game.

Tap [Start] on the gate of the LiveArea™ screen.

Saving data for a game

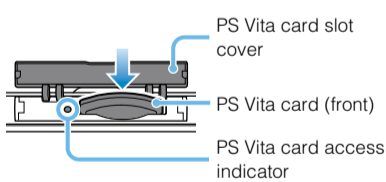
How to save data depends on the game. For details, see the instructions for the game. If you use the saved data on the memory card or the PS Vita card on a different PS Vita system, there may be times when you cannot earn trophies or save the data. See the User's Guide for details about saved data and trophies.



4 Quit the game.

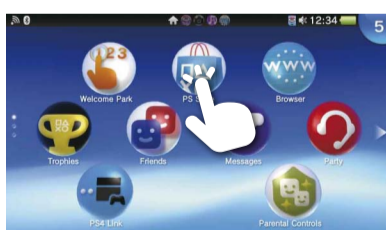
Press the (PS) button to return to the LiveArea™ screen, and then peel the screen.

Inserting or removing the PS Vita card



Open the PS Vita card slot cover upward, and then insert the card. To remove the PS Vita card, press it to release it from the slot. Do not remove the PS Vita card when the access indicator is blinking.

Downloading games and content from PlayStation®Store

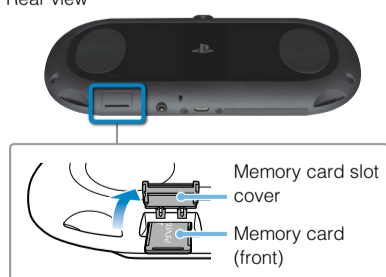


PlayStation®Store has a wide variety of content you can't get anywhere else, including games, free trial versions of the latest releases, game add-ons that make the games you have even more fun to play, and videos to purchase or rent.

To use PlayStation®Store, you need a Sony Entertainment Network account and an Internet connection. To download some content, a memory card is necessary.

Using a memory card

Rear view



Your PS Vita system is equipped with an internal memory card. You can start playing games and applications that require a memory card right after purchasing the system. Purchase a separate memory card when the internal memory card is full.

After purchasing a new memory card, follow the steps below to move data from the internal memory to the new memory card.

- 1 Insert the memory card only when the power of your PS Vita system is off. **Inserting or removing the memory card while the power is on might cause data corruption or loss.**
- 2 Turn on your PS Vita system, and then follow the on-screen instructions to move the data. Once data has been moved, the system will automatically restart.

- Once a memory card is properly inserted, data will be saved to it, and not to the internal memory card. This location where data is saved cannot be changed until the inserted memory card is removed.
- While a memory card is being inserted, the internal memory is inaccessible.

Turning off the power

Turning off the screen while the application is still active (standby mode)

Press the (Power) button. The power indicator will blink in green, and the system will then enter standby mode. To exit standby mode, press the (Power) button again or press the (PS) button.

Turning the power off completely

Press and hold the (Power) button for two seconds, and then tap [Power Off]. When turning on the system the next time, press and hold the (Power) button for two seconds.